



California Pan-Ethnic
HEALTH NETWORK

Envisioning the Future of Public Health in California

Sponsored by Blue Shield of California

Voices for Change Conference
Workshop Session 3, February 11, 2021

MODERATOR



Sarah de Guia, JD

Chief Executive
Officer, ChangeLab
Solutions

SPEAKERS



Meredith Lee, MPH

Health in all Policies
Team Lead, Office of
Health Equity,
California Department
of Public Health



**Clayton Chau, MD,
PhD**

Agency Director,
County Health
Officer, Orange
County Health Care
Agency



**Solange Gould,
DrPH, MPH**

Co-Director, Human
Impact Partners

“Fireside Chat”



(Picture credit to the Internet)

Risk of Inequitable Recovery

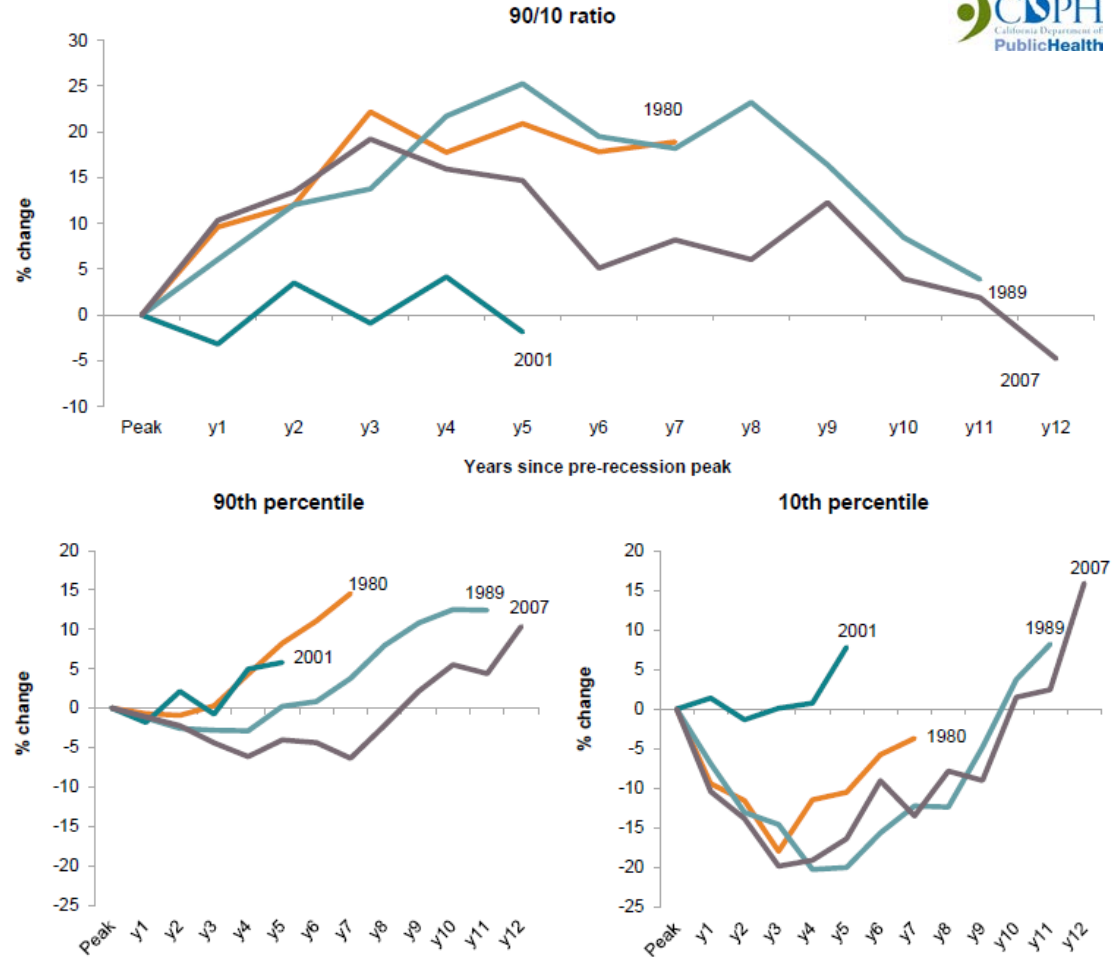
PPIC – Income Inequality and Economic Opportunity in California (December 2020)

- In the past 40 years, every recession except the dot-com bust of 2001 has resulted in a growing gap between high- and low-income families.
- This outcome stems entirely from larger income declines and slower recovery experienced by families at the bottom of the income distribution.
- Both high- and low-income families took years to recover, but the length of time was systematically longer for low-income families.

[Income Inequality and Economic Opportunity in California \(ppic.org\)](http://ppic.org)

FIGURE 10

Three of the last four recessions have resulted in increasing income inequality



Opportunities

- **Strategize for recovery at the same scale as response**
 - Prioritize community recovery as a public health emergency and central focus of Department, Agency, and Statewide action
- **Address underlying inequities**
 - Deepen data collection and analysis around SDOH and behavioral health drivers, disparities and impacts on public health outcomes
 - Pilot and evaluate SDOH focused intervention strategy
 - Strengthen partnerships with other state departments
- **Maintain effort on other public health issues**
 - Expand staffing capacity to manage prolonged emergency response and public health programs
 - Promote awareness of public health priorities
- **Strengthen state and local public health infrastructure**
 - Sustain focus on population health and public health prevention, protection and health promotion
- **Increase community engagement**
 - Expand bidirectional engagement with communities to help strengthen data, communications and intervention as a systemic organizational process

Resources

- COVID_19 Health Equity Playbook for Communities: [COVID-19 Health Equity Playbook for Communities \(ca.gov\)](#)
- COVID Equity page: [California's commitment to health equity - Coronavirus COVID-19 Response](#)
- Health Equity Metric: [Blueprint For a Safer Economy: Equity Focus \(ca.gov\)](#)
- Changelab Solutions:
 - [Blueprint for Changemakers:](#)
 - [Equitable Enforcement Guide to Achieve Health Equity](#)
- From Human Impact Partners:
 - [Health Equity Policy Platform for COVID-19 Response and Recovery:](#)
 - [Public Health Awakened, a national network of health equity advocates:](#)
 - [Health Departments Taking Action on Incarceration: A Framework for Advancing Health Instead of Punishment During COVID-19](#)
- CPEHN:
 - [Urge Governor Newsom to declare Racism a Public Health Crisis in California](#)

Contact Information

- **Sarah de Guia, JD**, Chief Executive Officer, ChangeLab Solutions, sdeguia@changelabsolutions.org
- **Meredith Lee, MPH**, Health in all Policies Team Lead, Office of Health Equity, California Department of Public Health, Meredith.Lee@cdph.ca.gov
- **Dr Clayton Chau, MD, PhD**, Agency Director, County Health Officer, Orange County Health Care Agency, CChau@ochca.com
- **Solange Gould, DrPH, MPH**, Co-Director, Human Impact Partners, solange@humanimpact.org
- CPEHN facilitator: wzhang@cpehn.org