

## Speaker Directory



### Noha Aboelata, MD

CEO and Founder  
Roots Community Health Center  
📍 @RootsEmpowers



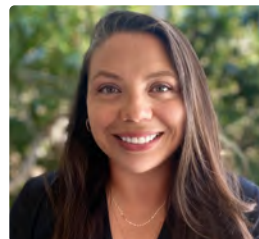
### Chad Costello, CPRP

He/Him  
Executive Director  
California Association of Social  
Rehabilitation Agencies



### Maraky Alemseged

They/She | (*mah-rah-key ah-lem-seh-ged*)  
Los Angeles Organizer  
Black Alliance for Just Immigration  
📍 @InstaBAJI  
🐦 @BAJI



### Liza Davis Polomski

She/Ella | (*Lisa*)  
Director, Community Engagement and  
Advocacy  
The Children's Partnership  
🐦 @kidspartnership



### Gabriella Barbosa, JD

Managing Director of Policy  
The Children's Partnership



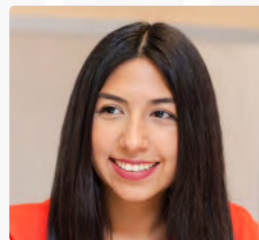
### Alegria De La Cruz

She/Her/Ella | (*ah-lay-gree-uh*)  
Director, Office of Equity  
County of Sonoma



### Liz Blum, MS

They/Them/She/Her  
Co-Founder, Campaign Coordinator  
Decarcerate Sacramento  
🐦 @sacblum



### Daniela Flores, MPH

She/Her/Ella  
Executive Organizer  
Imperial Valley Equity & Justice Coalition  
📍 @IVEquityJustice



### Joe Calderon

He/Him  
Community Health Worker



### Iyanrick John, JD, MPH

He/Him  
Vice President of External Affairs  
ChangeLab Solutions

### Gina Charusombat

She/Her | (*Gee- nah Charu-some-baht*)  
Policy and Research Associate  
Strategic Concepts in Organizing and  
Policy Education  
📍 @scopelosangeles



### Heather Jue Northover, MPH

She/Her | (*Jue as in "Joo" or "Jew"*)  
Principal Analyst  
County of Los Angeles Anti-Racism,  
Diversity, and Inclusion Initiative  
🌐 [www.ceo.lacounty.gov/ardi](http://www.ceo.lacounty.gov/ardi)

## Speaker Directory



### Wyatt Kelly, BA English and Native Studies

He/Him | (why-it)

Project Lead & Coordinator  
California Consortium for Urban  
Indian Health



### Rafik Nader Wahbi, MPH

He/Him | (Rah - feek)

Community Health Scientist,  
Researcher, and PhD Student  
Frontline Wellness and UCLA  
[@CHSCA\\_Lab](#)



### Jessica Miller, LVN

She/Her/Ella

Full Spectrum Doula, Clinical Lactation  
Specialist, Childbirth Educator, and  
Midwife Assistant President  
Jurupa Valley Doulas  
[@jurupavalleydoulas](#)



### Ruby Olvera

She/Her | (Rub-ee-d)

Bilingual Community Engagement Analyst  
Office of Equity, Sonoma County  
[@rubyolvera](#)



### Rohan Radhakrishna, MD, MPH, MS

He/Him

Deputy Director & Chief Equity Officer  
Office of Health Equity, California  
Department of Public Health



### Jeffrey Reynoso, DrPH, MPH

He/Him

Regional Director, Region 9  
U.S. Department of Health and  
Human Services



### Sophia (Sophie) Simon-Ortiz, MPH

She/They | (Simon like "Simon Says" Or-Teez)

Public Health Organizing Project Director  
Human Impact Partners  
[@HumanImpact\\_HIP](#)  
[@PHAwakened](#)



### Emily Wu Truong

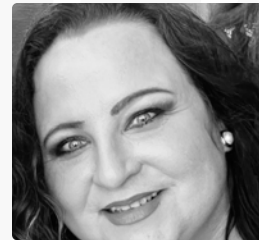
Storyteller & Artist for Emotional  
Resilience and Healing  
[@emilywspeaks](#)



### Kelechi Ubozoh

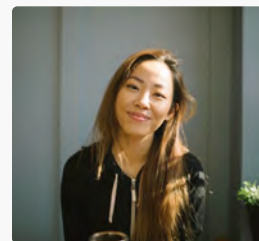
She/Hers | (Cah-leh-chee)

CEO  
Kelechi Ubozoh Consulting  
[www.KelechiUbozoh.com](http://www.KelechiUbozoh.com)



### Celia Valdez

Director, Health Outreach and Navigation  
Maternal and Child Health Access  
[www.mchaccess.org](http://www.mchaccess.org)



### Julie Yeeun Kim

She/Her | (Julie Ye as in Kan "Ye" Eun Kim)

Artist