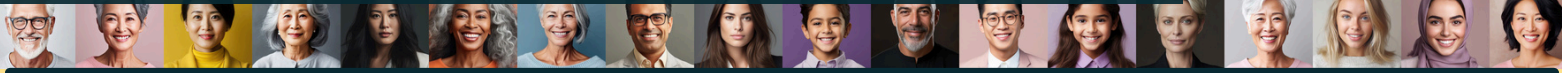


MILLIONS OF CALIFORNIANS WILL LOSE HEALTH CARE COVERAGE UNDER REPUBLICAN PROPOSALS



House Republicans are expected to release an annual budget proposal this year that calls for huge cuts to Medicaid (Medi-Cal in California) and enhanced federal subsidies in Covered California, California's state-based marketplace as well as proposals to eliminate the Prevention and Public Health Fund which supports community-level efforts to address chronic conditions like heart disease, diabetes and cancer, Alzheimer's, air pollution and other communicable diseases.

Taken together, these proposals will likely result in millions of California seniors, disabled, children and working adults losing access to critical health care coverage and preventive programs when they need it most, leading to poorer health outcomes for our communities. This fact sheet highlights how GOP proposals would harm the health of diverse constituents in your district.

California's Congressional leaders must:

- **Reject Proposals to Cap or Cut Medi-Cal and Eliminate Enhanced Subsidies in Covered California** on which millions of California consumers rely while ensuring all Californians including low-English proficiency, immigrants, women and LGBTQ+ people can safely access the health care they need.
- **Continue to Fund Proven Health Prevention Strategies like the Prevention and Public Health Fund** which provides vital local funds for preventive programs by trusted community-based health workers to prevent chronic and costly health conditions, like diabetes and heart disease from becoming worse.

CA CONGRESSIONAL DISTRICT 40 (KIM) DEMOGRAPHICS

Racially and ethnically diverse population:

- 54% White
- 25% Hispanic or Latino
- 19% Asian
- 1.8% Black or African American
- 0.2% Native Hawaiian or Pacific Islander
- 0.7% American Indian or Alaska Native

English is the main language spoken (63.6%) followed by Spanish (15.9%), Asian and Pacific Islander languages (12.4%) and other Indo-European languages (6.5%). Nearly 36% of people speak a language other than English which poses difficulty for individuals in accessing health care services unless adequate in-language support is provided.

Health Care Coverage at Risk

Medi-Cal

Medi-Cal provides no-cost health care services for 14.5 million individuals and families with low incomes. **More than 20% (162,484) of CD-40 residents rely on Medi-Cal.** Of the nearly 14.5 million current Medi-Cal enrollees across the state, 5 million (34%) of them were able to enroll because of federal ACA expansions. **Nearly 20% of Californians enrolled in Medi-Cal through ACA expansions reside in the counties that make up Congressional District 40.**

Medi-Cal Enrollment	
Percent of Residents Enrolled	21%
Number Enrolled	162,484

Impact of Proposed Cuts

Congressional leaders are considering proposals that would result in deep cuts to Medi-Cal by capping the program, eliminating the enhanced federal matching rate for Medicaid expansion adults, lowering the minimum Medi-Cal matching rate for all enrollees and imposing onerous work requirements on Medi-Cal recipients. **If passed this could result in up to 5 million Californians statewide and tens of thousands of CD-40 residents, many belonging to communities of color, losing their health care coverage, access to mental health, substance use and dental services through Medi-Cal.** Loss of coverage means children will be unable to see a doctor when they're sick, and many individuals will end up relying on more costly emergency room visits as their usual source of care.

Health Care Coverage at Risk

Covered California

Covered California provides affordable health care coverage for individuals and families without employer-based coverage who earn modest incomes. **As many as 5.4% (41,310) of CD-40 residents are enrolled in Covered California, the state's health care marketplace, with 77% (31,850) benefiting from subsidies.**

Covered CA Enrollment	
Percent of Residents Enrolled	5.5%
Number Enrolled	41,310
Percent of Residents Enrolled and Receiving Subsidies	4.2%
Number of Residents Enrolled and Receiving Subsidies	31,850

Source: Covered CA, 2024

Impact of Proposed Cuts

Congressional leaders are considering repealing the Inflation Reduction Act (IRA) enhanced premium subsidies that expire at the end of 2025. **If enhanced subsidies are not renewed, up to 1.7 million Covered California enrollees statewide and tens of thousands of CD-40 residents, many belonging to communities of color, could see annual premium increases of a thousand dollars or more.** Higher premiums will force many CD-40 residents to drop their health care coverage or be forced to choose between going to a doctor's visit and paying for food. Taken together these proposals, will harm tens of thousands of seniors, children, disabled and working adults, in District 40.

GOP Cuts Mean Worse Health Outcomes for California's Diverse Communities

Roughly 40% of California adults report having at least one of five chronic conditions: serious psychological distress, high blood pressure, heart disease, diabetes, or asthma. Often these conditions are co-morbid, impacting communities of color at higher rates. Natural disasters in California, like fires, an extended drought, or everyday exposures, such as air pollution can worsen existing chronic conditions and increase injuries.

GOP leaders are threatening to defund the Prevention and Public Health Fund, which provides funding for local and state programs that fight air pollution and obesity, curb tobacco use, increase access to immunizations and other preventative care services and track and prevent the spread of infectious diseases such as COVID-19. **Elimination of the Prevention and Public Health Fund, will reduce state and local funds for community and clinical health programs and community-based workers, exacerbate mental health and substance use conditions, and lead to higher mortality rates by making preventable conditions like asthma and diabetes worse.**

Health Care Status	CA-40
Percent of Residents 18+ Diagnosed with Asthma	13.6%
Percent of Residents 18+ Diagnosed with Diabetes	9.8%
Percent of Residents 18-64 Reporting Fair or Poor Health	12.9%
Percent of Residents 65+ Reporting Fair or Poor Health	17.6%
Percent of Residents 18+ Who Reported Serious Psychological Distress in the Past 12 Months	14.0%
Percent of Residents 18+ Who Needed Help for Emotional/Mental or Alcohol/Drug Problem in the Past 12 Months	23.5%

Who We Are

The **California Pan-Ethnic Health Network (CPEHN)** is a statewide multicultural health advocacy organization. Founded over 30 years ago, CPEHN brings together and mobilizes communities of color to advocate for public policies that advance health equity and improve health outcomes in our communities. We derive our strength from our mobilizing arm, **the Having Our Say coalition which consists of over 30 community-based organizations across California** working together to improve access to care and health outcomes as well as through our Behavioral Health Equity Collaborative (BHEC) partners.

Contact CPEHN (info@cpehn.org) to learn about successes and challenges from community members who have accessed health care services.

Representative Young Kim: District 40 includes a total population of 755,867 encompassing parts of Orange, San Bernardino, and Riverside counties.